

Behavioral responses of satellite tracked Blainville's beaked whales (*Mesoplodon densirostris*) to mid-frequency active sonar

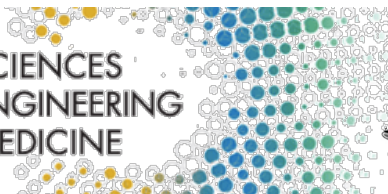
Trevor W. Joyce^{1,2}, John W. Durban², Diane E. Claridge³,
Charlotte A. Dunn³, Leigh S. Hickmott⁴, Holly Fearnbach⁵,
Karin Dolan⁶, David Moretti⁶

1. National Research Council, National Academies of Science, Engineering, and Medicine, Washington, D.C., USA
2. Southwest Fisheries Science Center, NOAA/NMFS, La Jolla, California, USA
3. Bahamas Marine Mammal Research Organization, Marsh Harbour, Abaco, Bahamas
4. Sea Mammal Research Unit, University of St Andrews, St Andrews, U.K.
5. SR³ SeaLife Response, Rehabilitation, and Research, Mukilteo, Washington, USA
6. Naval Undersea Warfare Center, Newport, U.S.A.



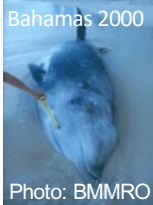
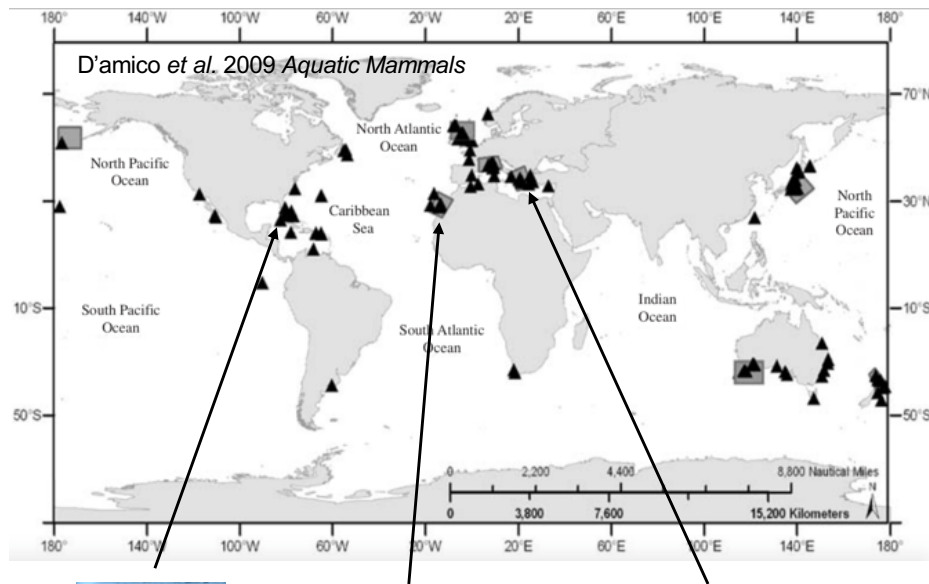
The National
Academies of

SCIENCES
ENGINEERING
MEDICINE



Background: Mass Stranding Events and Naval Exercises

Co-occurrence in Space



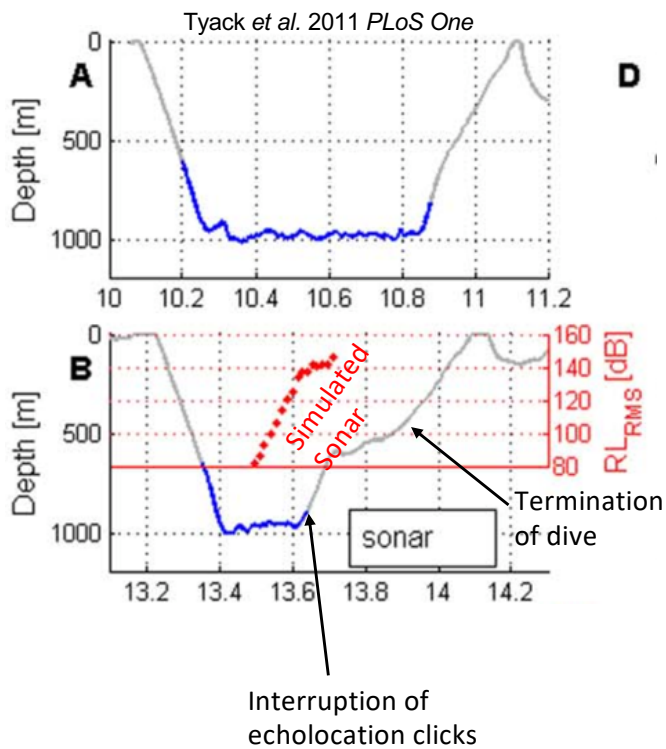
Co-occurrence in Time



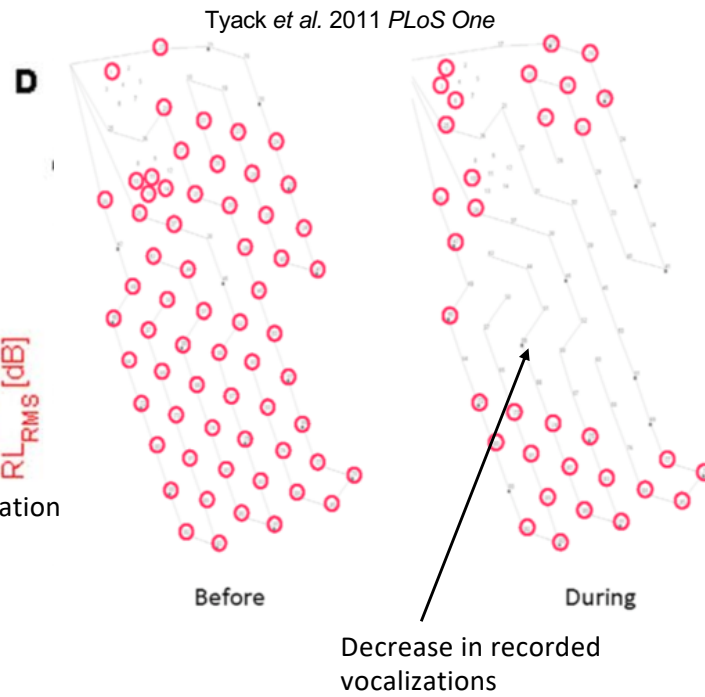
Mass stranding events concurrent with naval sonar

Background: Disruption of Foraging and Movement

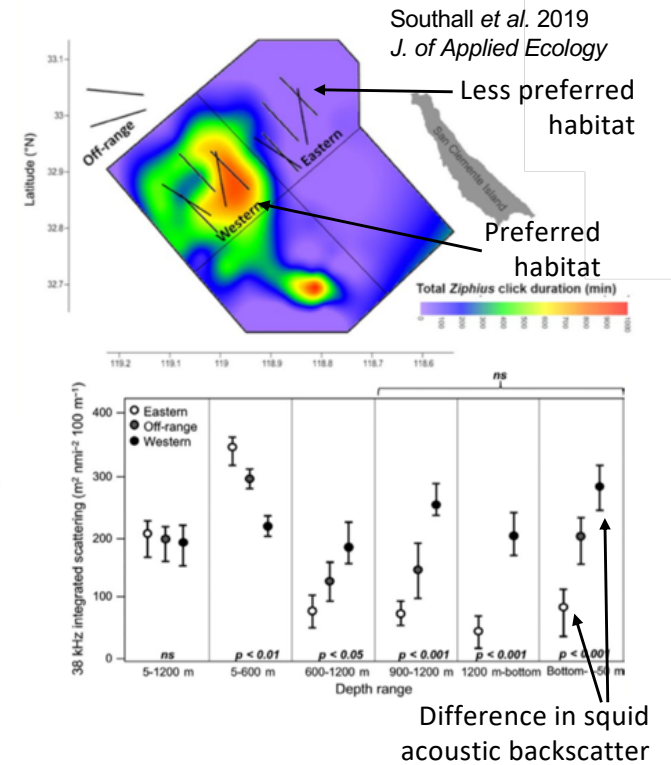
Disruption of Foraging Behavior



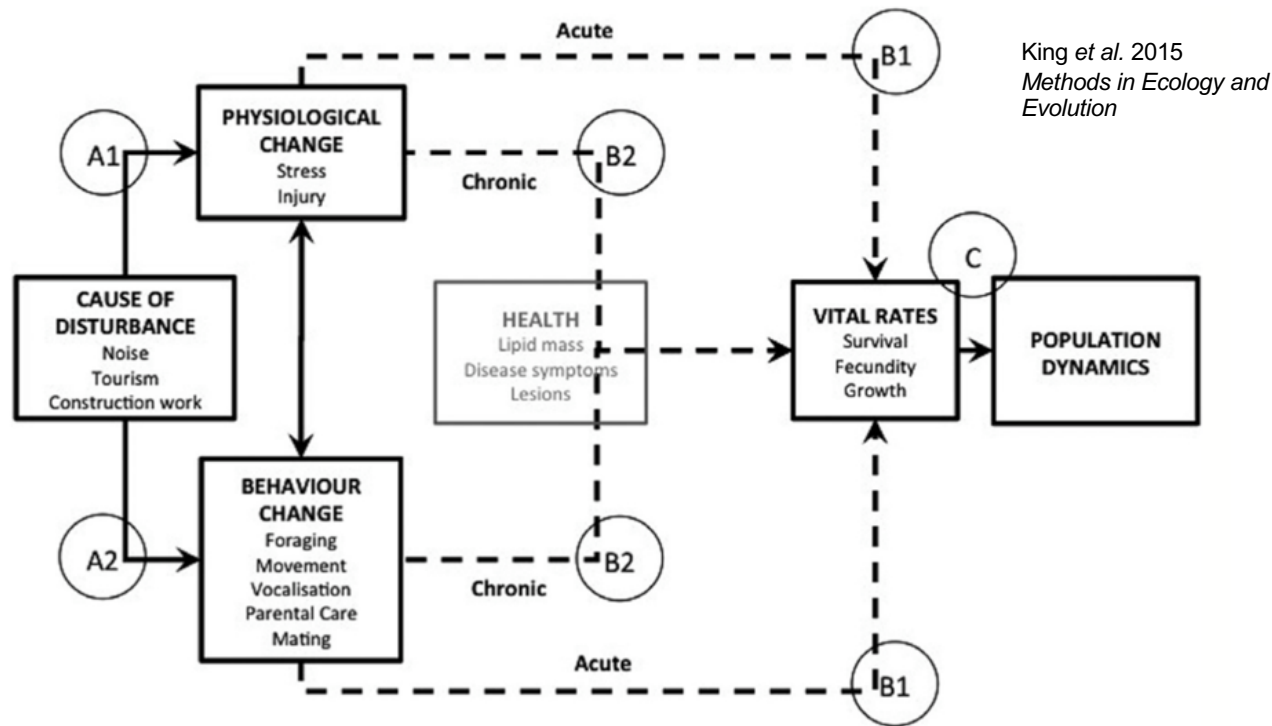
Disruption of Distribution Patterns



Potential Energetic Consequences



Background: Population Consequences of Acoustic Disturbance (PCAD)



Methods: LIMPET Satellite Transmitter Tags

LIMPET Satellite Transmitter Tags

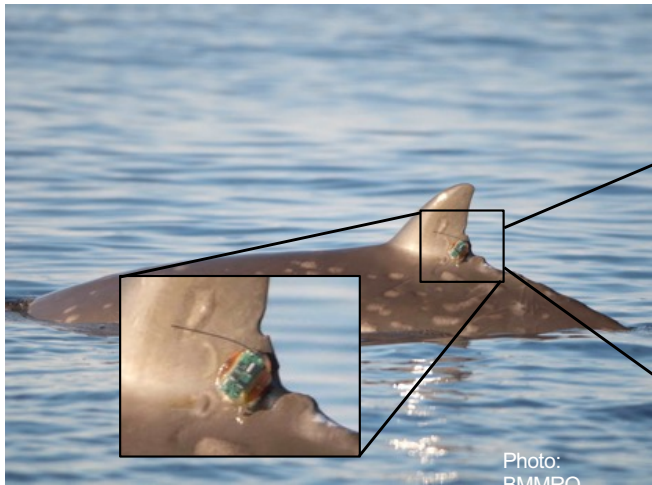
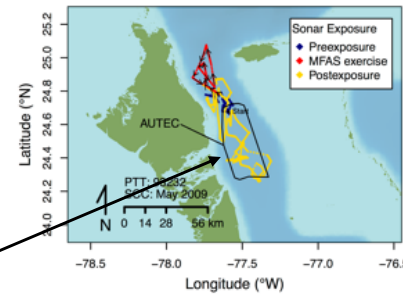
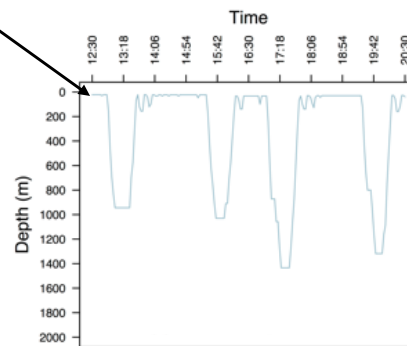


Photo: BMMPO

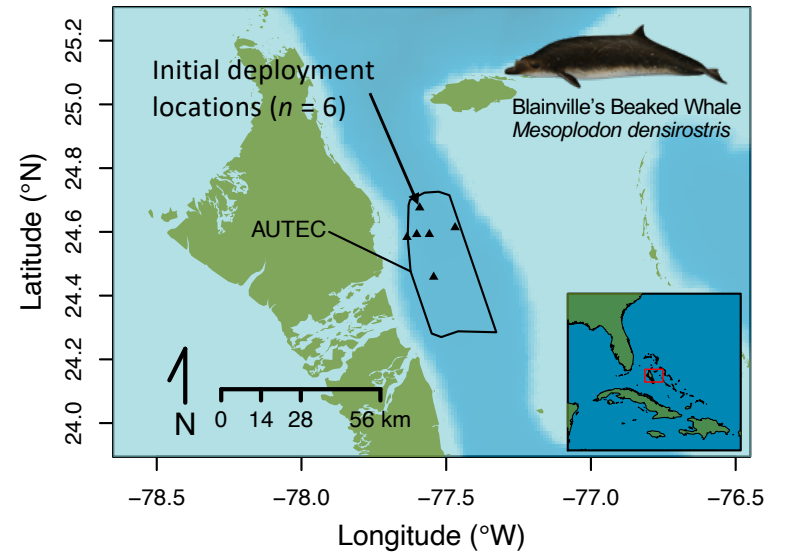
Spatial Movements



Dive Behavior



Deployments at AUTEC prior to anti-submarine warfare exercises (2009 – 2015)

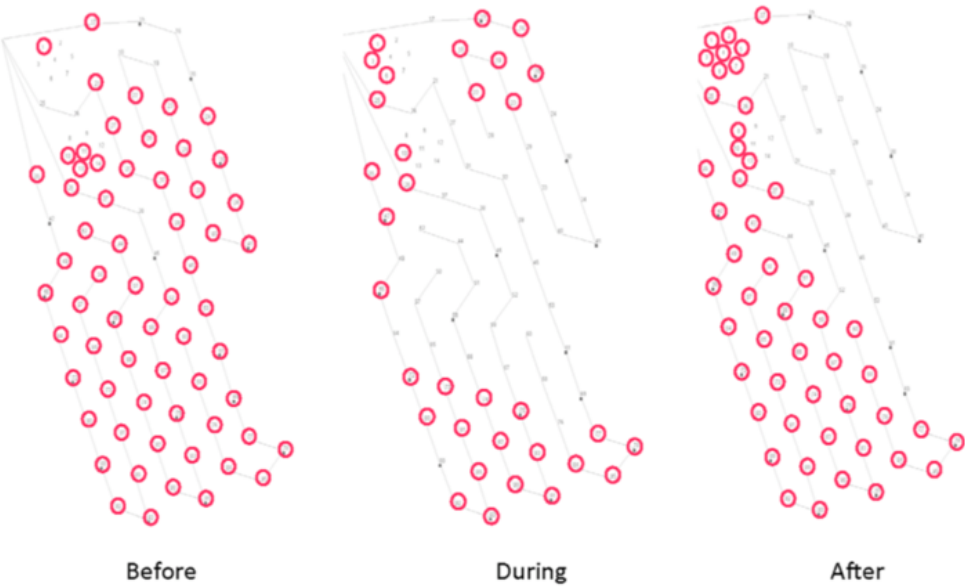


Illustrations: Uko Gorter

Objective: Bridge spatial and temporal scales of previously documented responses

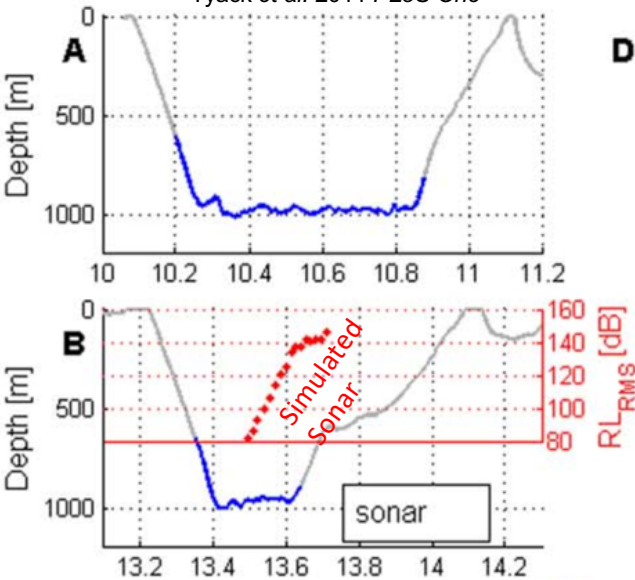
Population-level Displacement Response

Tyack et al. 2011 PLoS One



Individual-level Foraging Interruption Response

Tyack et al. 2011 PLoS One



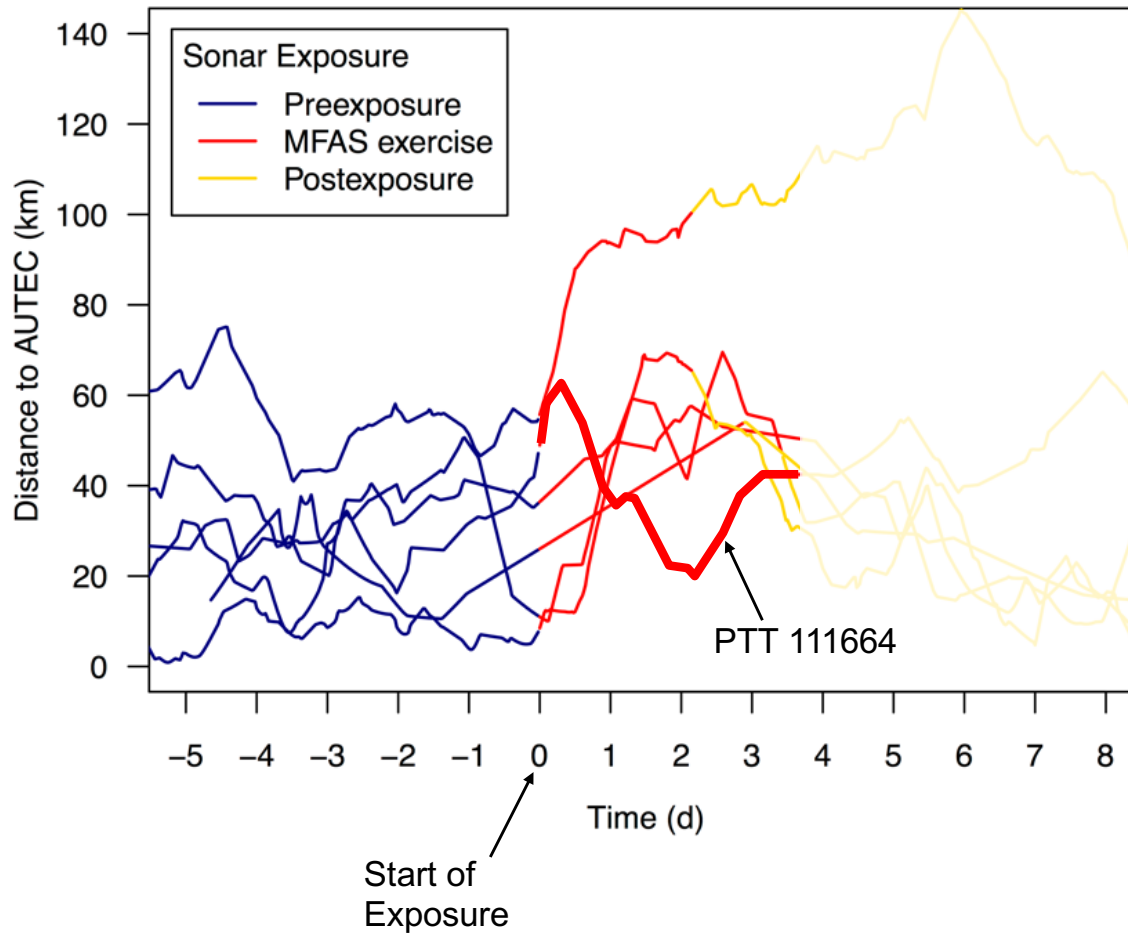
Medium-endurance
LIMPET satellite tags

Objective: Bridge spatial and temporal scales of previously documented responses

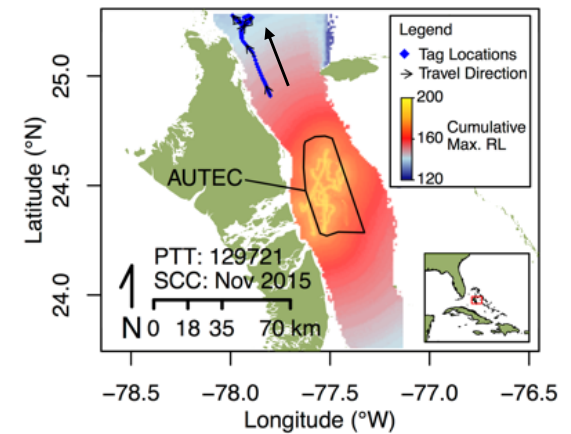
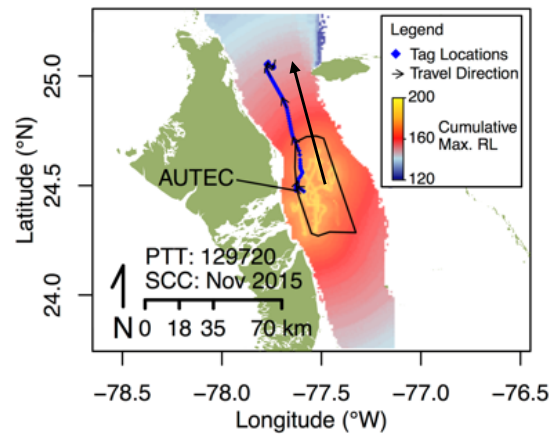
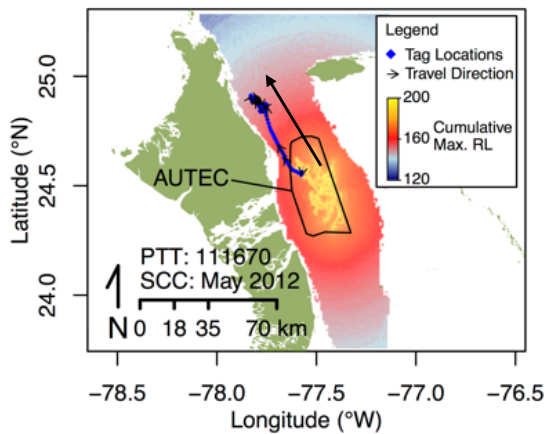


- 1) Whether, where, and how far were individuals displaced?
- 2) How did received levels change over displacement?
- 3) Did deep dive cycles continue to occupy the same proportion of time budgets?
- 4) How soon did displaced animals return?

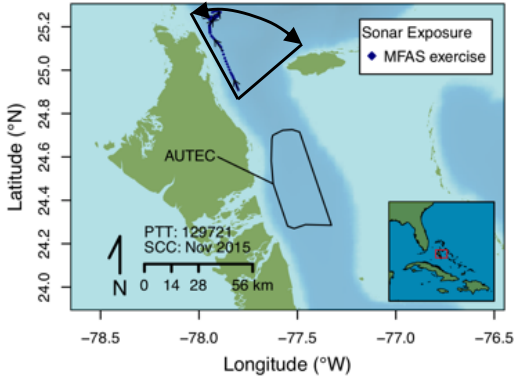
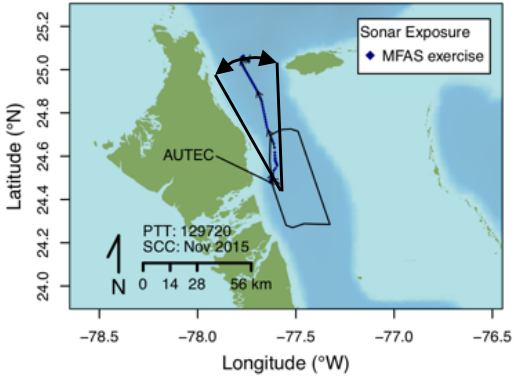
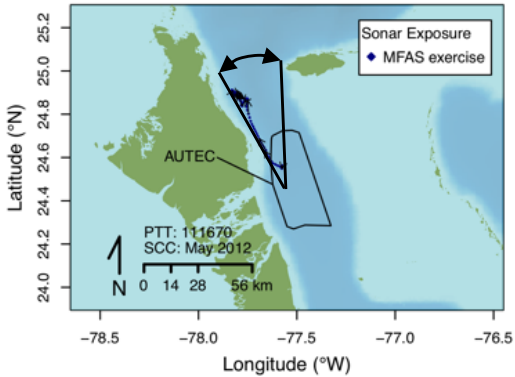
Results: 1) Whether and how far were individuals displaced?



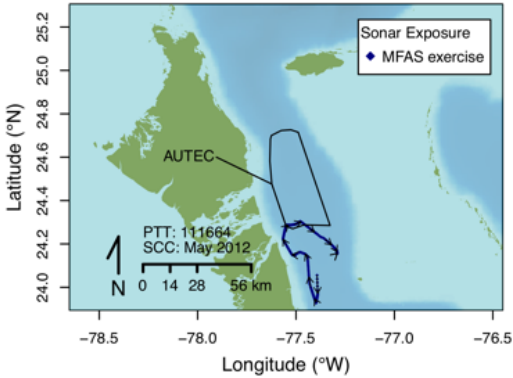
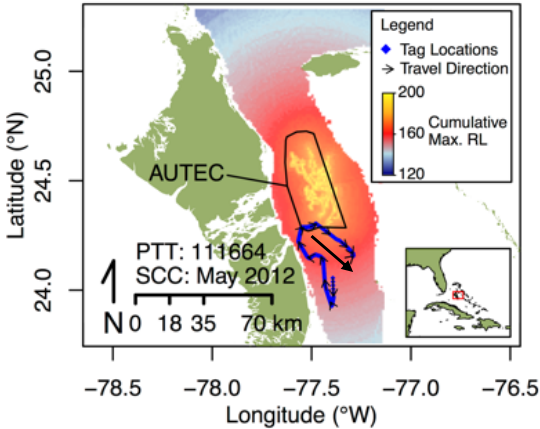
Results: 1) Where were individuals displaced?



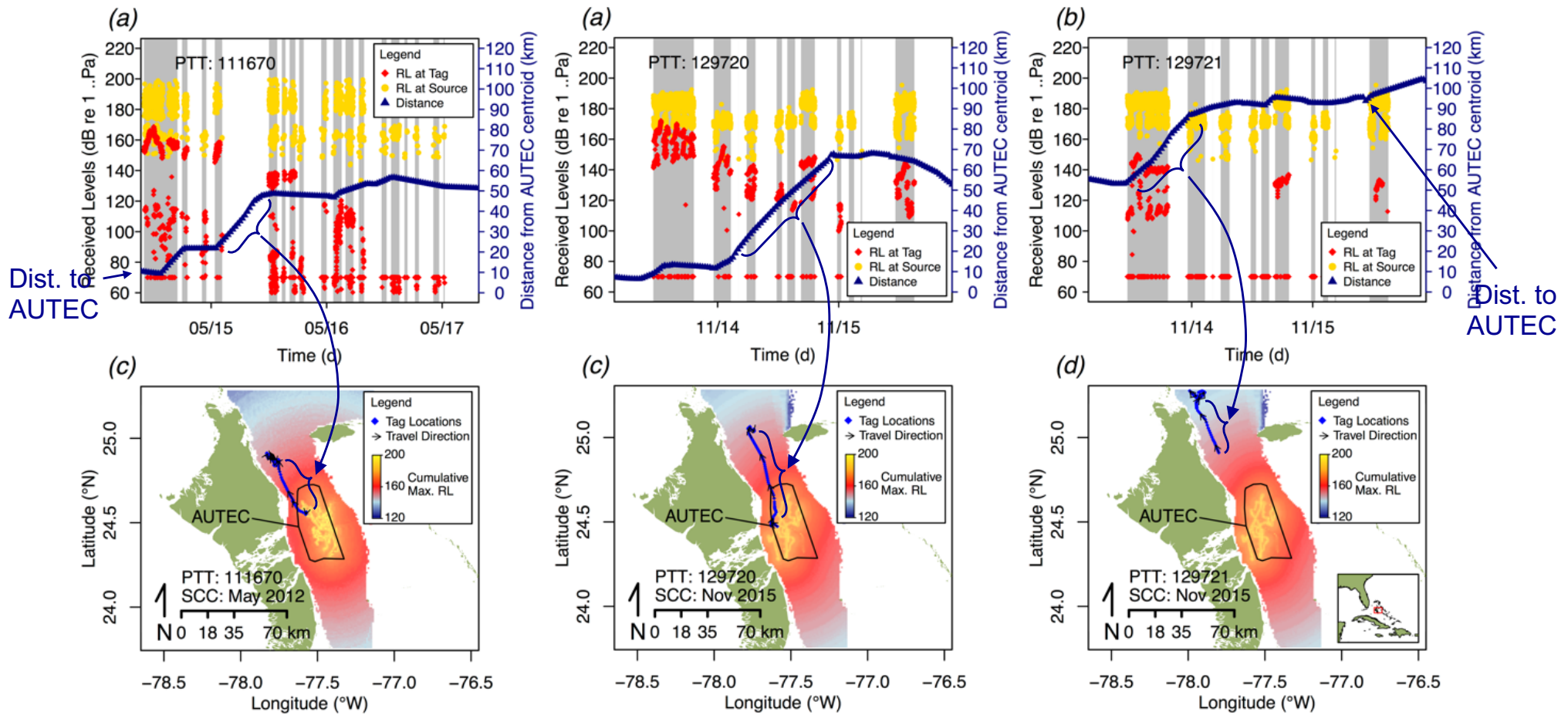
Results: 1) Where were individuals displaced?



Results: 1) Where were individuals displaced?



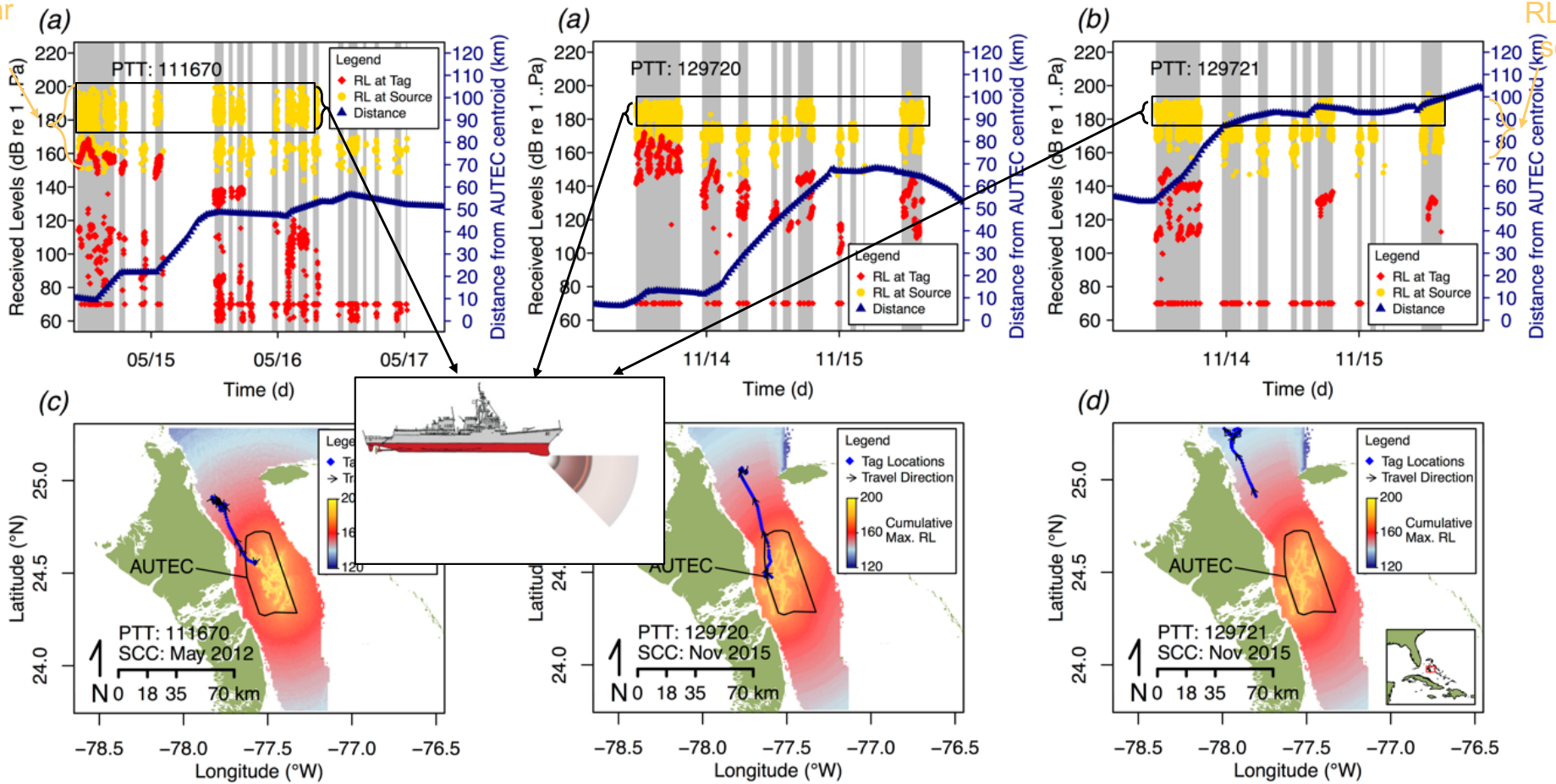
Results: 2) How did received levels change over displacement?



Results: 2) How did received levels change over displacement?

RL near source

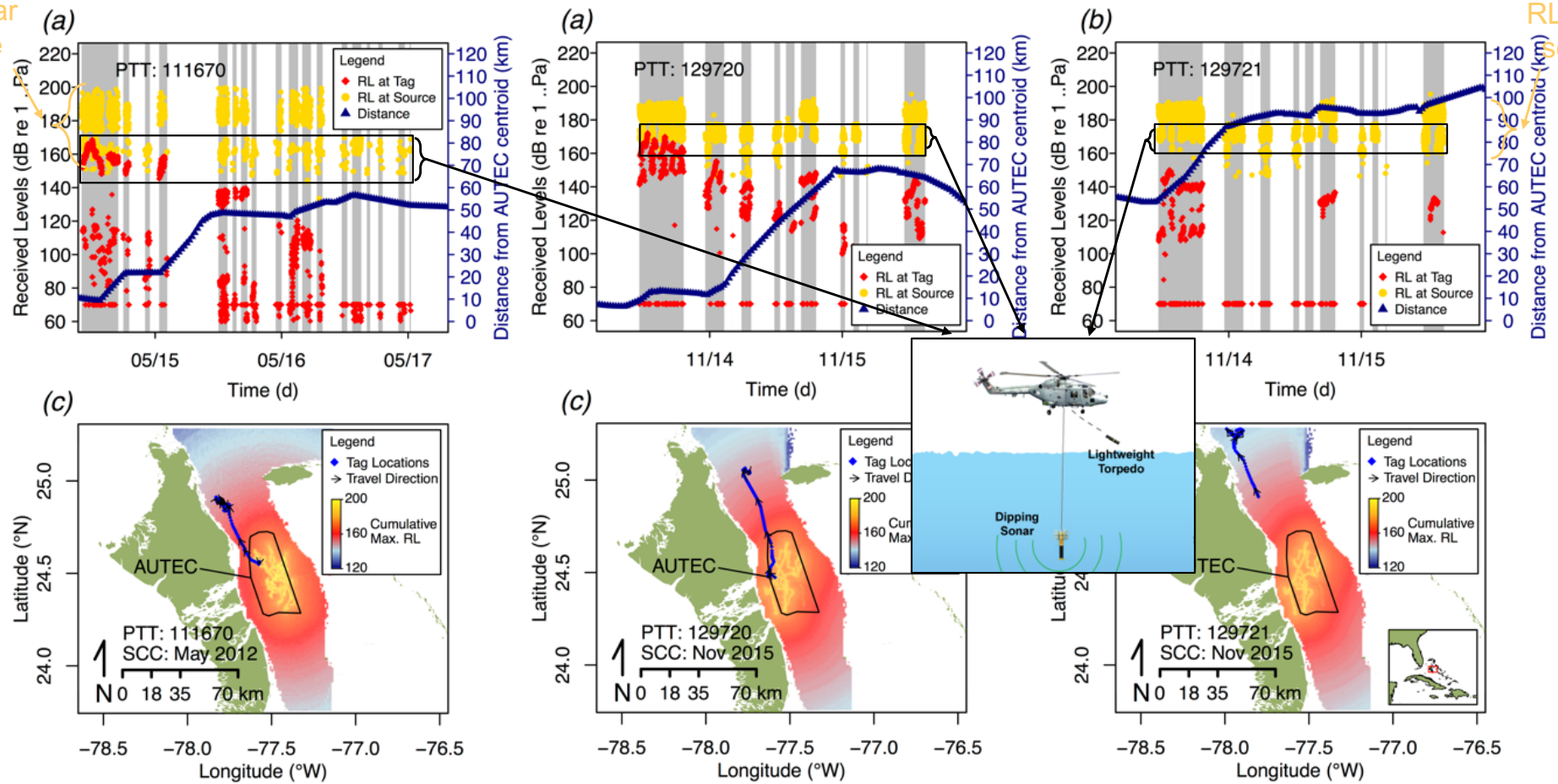
RL near source



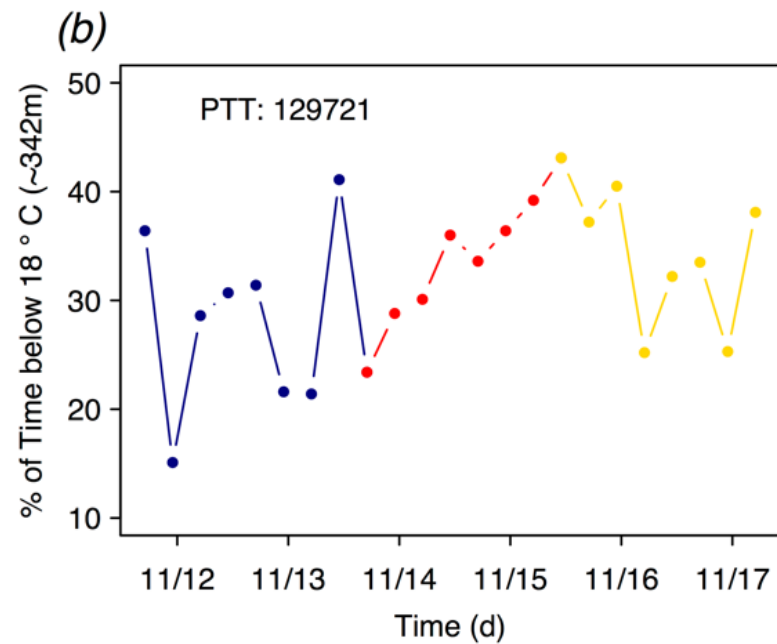
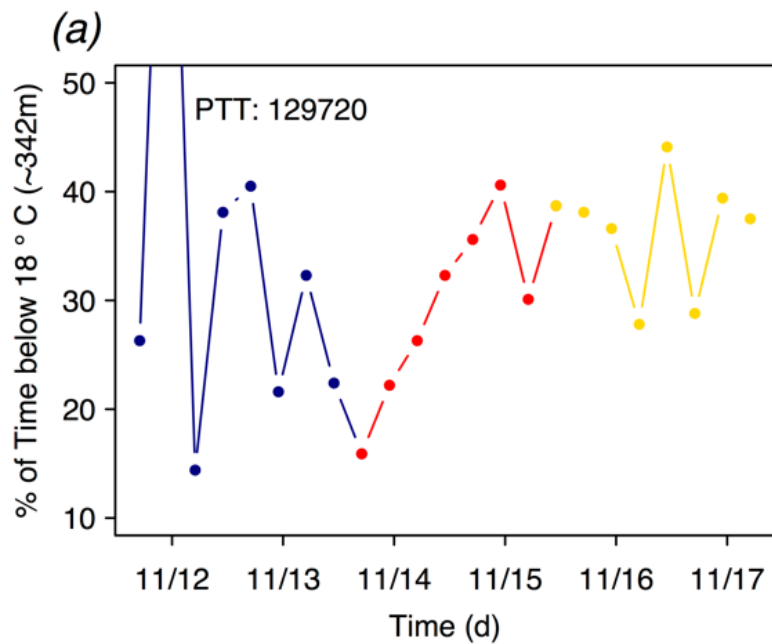
Results: 2) How did received levels change over displacement?

RL near source

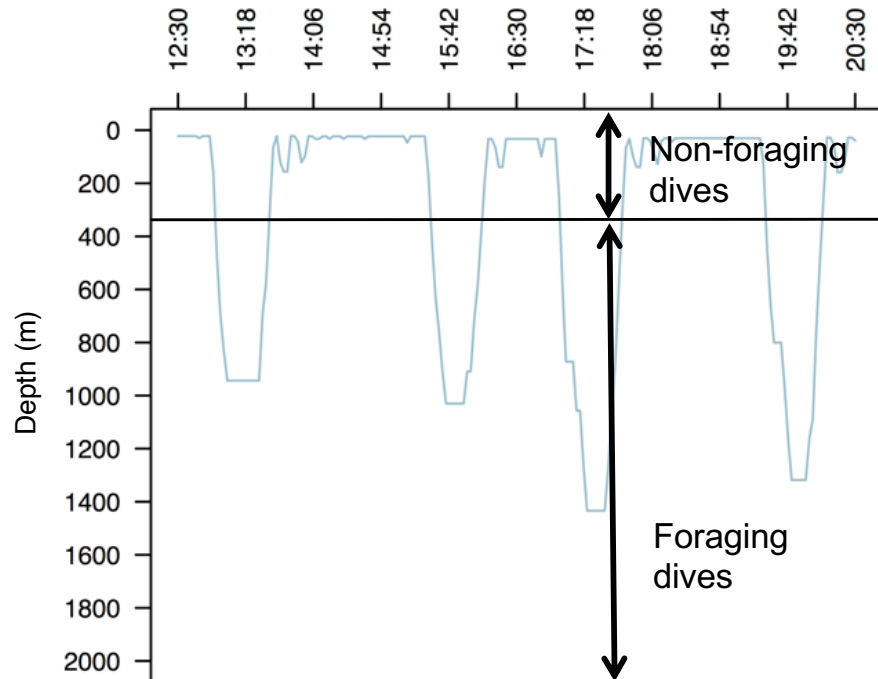
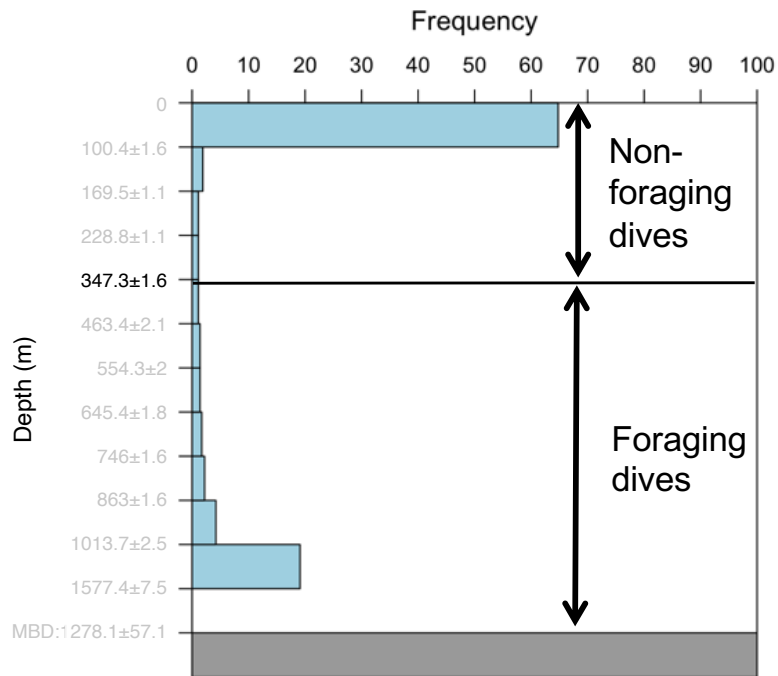
RL near source



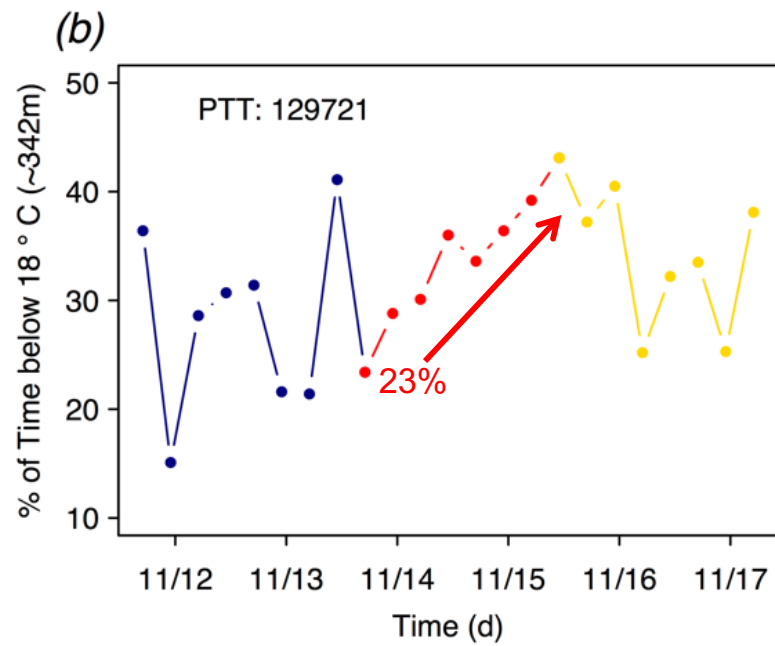
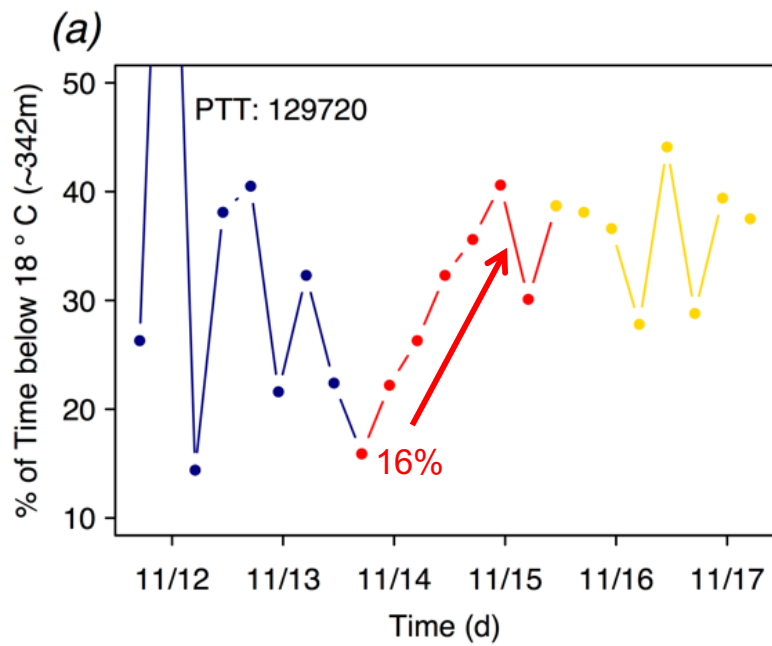
Results: 3) Did deep dives continue to occupy the same proportion of time budgets?



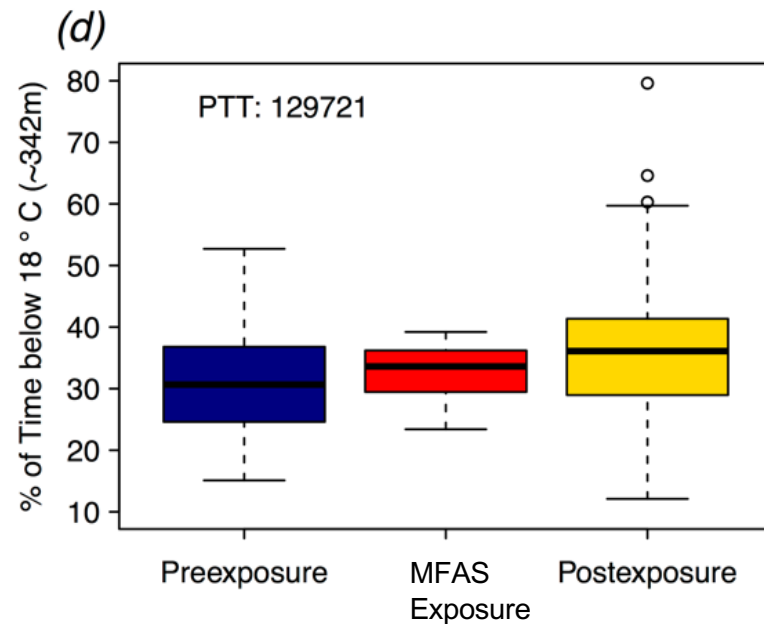
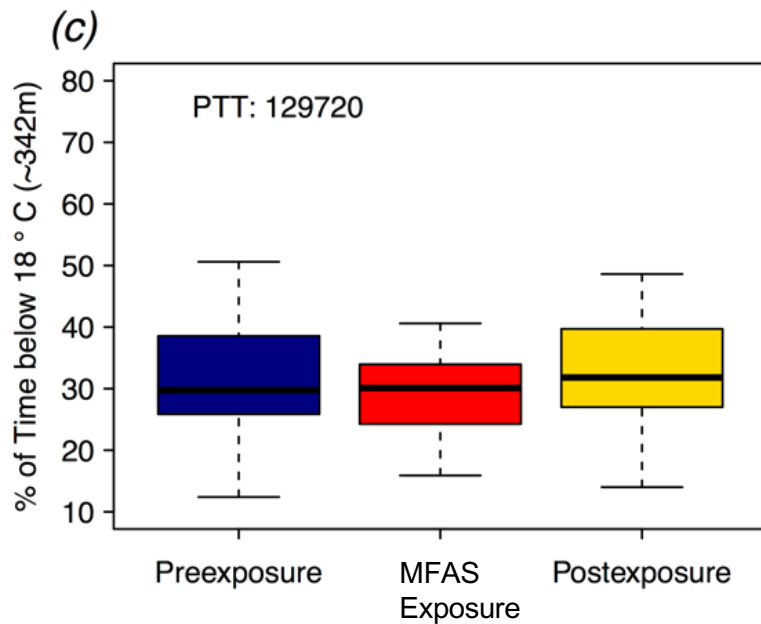
Results: 3) Did deep dives continue to occupy the same proportion of time budgets?



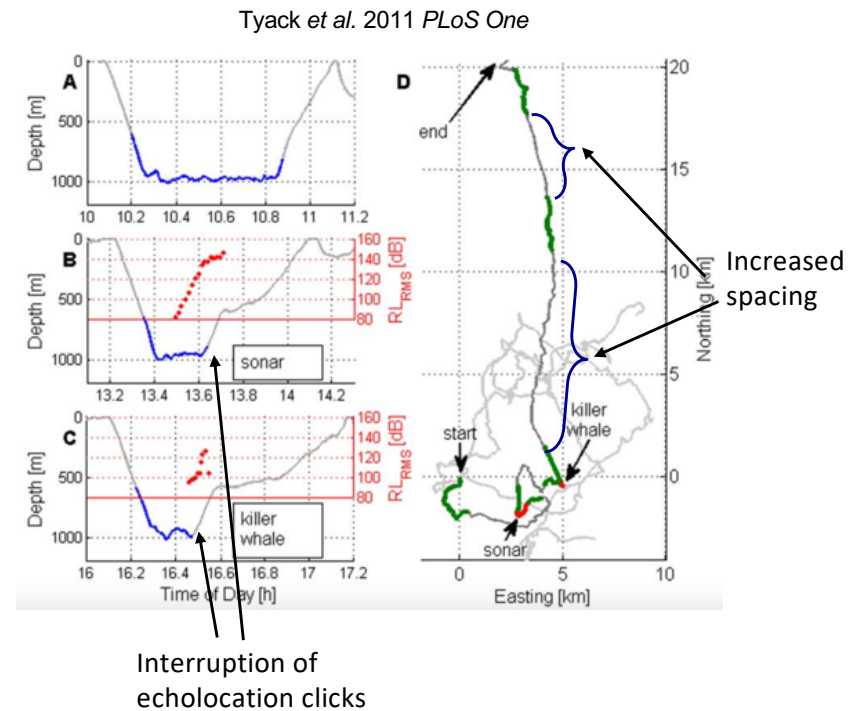
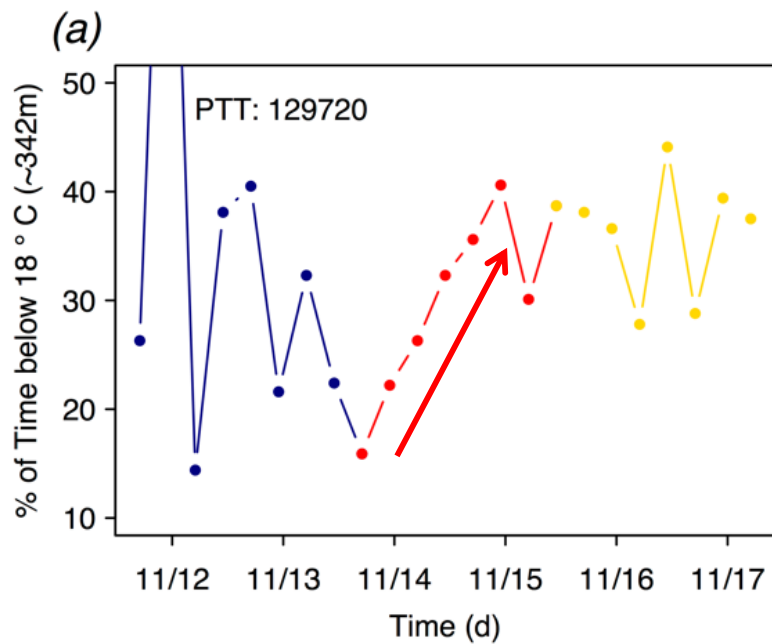
Results: 3) Did deep dives continue to occupy the same proportion of time budgets?



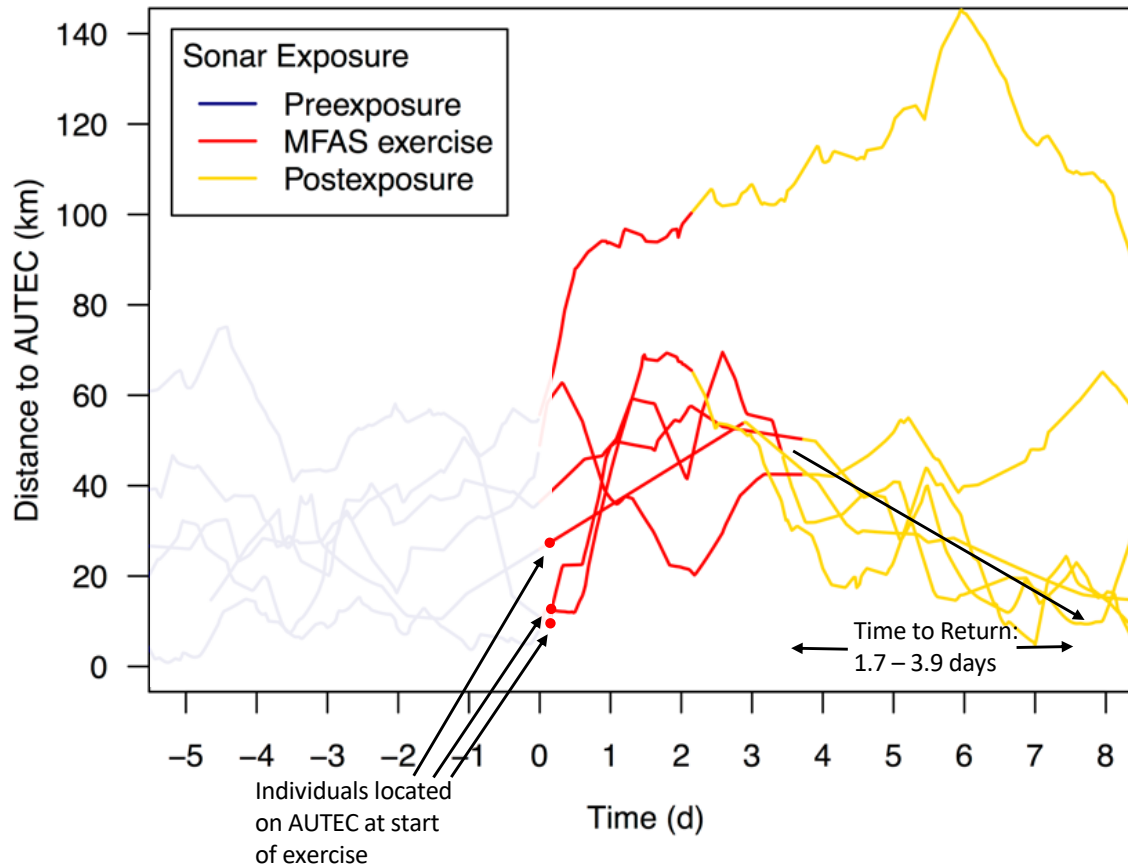
Results: 3) Did deep dives continue to occupy the same proportion of time budgets?



Results: 3) Did deep dives continue to occupy the same proportion of time budgets?



Results: 4) How soon did displaced animals return?



Conclusions

Observed behavioral patterns were consistent with previous responses



Information added by satellite tags:

- Confirmation of displacement response
- Displacements extended beyond geographic area covered by passive acoustic array
- Magnitude of changes in RL
- Continuation of deep foraging dives during exposure
 - Transient reductions during initial flight

Future Directions

- Energetic consequences of displacement and foraging interruption responses
 - Comparison of AUTEK and displacement areas using AUV bioacoustic sampling

Acknowledgments: Many thanks!

Field Collaborators:

- Robert Pitman, Olivia Patterson, Aaron Banks, Marie Guilpin, Kendria Ferguson, Eric Lewallen and Edward Adderley
- Captains and Crews of the *R/V Walton Smith* and *M/V Slumber Venture*

Funders:

- Office of Naval Research
- U.S. Navy's Living Marine Resources Program
- Strategic Environmental Research and Development Program
- National Science Foundation Graduate Research Fellowship Program
- National Research Council Post-doctoral Associateship Program

